



Leicestershire Scout and Guide Choir

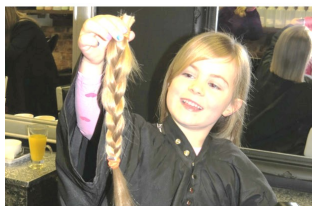
The choir has had an exciting first two terms. Having had our first rehearsal in January our debut performance was during 'Sound Off' at Loughborough Town Hall on 11 April. We were all a little bit nervous but the Choir received rave reviews and sounded really impressive, especially as they had only had three rehearsals.

The next outing was five weeks later at Conkers on 16 May. The Scouts were having an activity day there and invited us to take part in the pre-show entertainment. It was an early start and once again the choir did well. The Guides even managed to photo bomb a group photo with Bear Grylls!

Our final performance was at the Scout AGM on 6 July. There was a small turn out for this one, however they were again congratulated on their singing. Looking forward to next term, there are a couple of Christmas concerts planned and we are very keen to recruit new members. The next rehearsal is on Saturday 5 September at Holy Apostles, Imperial Avenue, from 9.30 a.m. to 1.00 p.m. The cost is £2 per rehearsal. We are happy to welcome girls aged 9 years and upwards. Please pass on the details to any of your older Brownies, Guides or Senior Section members who may be interested.

For further information please contact me on nicky.calow@hotmail.co.uk

*Nicky Calow
Girlguiding Choir Coordinator*



Amazing Amelia

Amelia Baker, of Wigston, had her long hair cut short so her blonde plait could be donated to the Little Princess Trust, to be made into a wig for a child who has lost hair through cancer.

The campaign was inspired by Loubob's Legacy, an Oadby fund collecting for Brain Tumour Research in memory of Louis Kenney, who died a year ago from a brain tumour aged 13.

Amelia is a member of the 2nd Oadby (Trinity Methodist) Rainbows and she raised the fantastic amount of £1,106 for the charity. Well done, Amelia!

*Deanna Lavelle
Leader*

Girlguiding Leicestershire, 97 Princess Road East, Leicester LE1 7DW
Tel: 0116 254 5290 www.leicestershireguides.org
Fax: 0116 254 2587 email: office@leicestershireguides.org
Registered Charity No 521779



Issue
No.287
September
2015

BULLETIN

To describe my first few months as County Commissioner, I would have to say "non stop". I've visited camps, open days, Brownie holidays, met with Queen's Guides, made 306 s'mores (a personal best) and signed a toilet in a field.

Everywhere I've been there have been teams working away. There was a team of cooks turning out amazing meals for 50 at the summer BP weekend. A team of Senior Section girls pulling together to create a brilliant weekend for a Senior Section Permit. I saw Guides working as a team at the WWAM day to float a ball out of a water pipe that was full of holes - the things you do when you're a Guide! I've met with Commissioners who are building their team for their District or Division. I saw Brownies working in sixes to create enormous banners for their football competition.

I've been building my team with my two Assistant County Commissioners, Sam and Seonaid. Many of you will already know Sam as a trainer and Hinckley's Division Commissioner and Seonaid will be familiar as our County Residential Adviser for Guides and The Senior Section. I'm lucky to be supported by two such knowledgeable, cheerful and hard working ladies.

In a team everyone has their role to play, so each part can work together like a well oiled machine. We're beginning to put together our plans for the future and are always ready to hear your views whether it's via a Survey Monkey questionnaire, by emailing us or by coming up and having a good old chat with us.

Teams need to practice working together. Sam, Seonaid and I will have plenty of time for practice over the next 5 years. We'll definitely need to work on our team selfies!!

What will you and your team achieve this term?



*Rachel Webb-Jenkins
County Commissioner*

**New Leaders
training**
Various dates in
September
See page 5

#PassItOn
Wednesday 23
September
Tea Party at
County Office
10.00 am -
5.00 pm

**Sectional
trainings**
Guides
September
Brownies
November
Rainbows
November
*See pages
6 & 11*

**Charnwood
2016**
Pull-out
Leaflet
Centre pages

**Guiding
Essentials**
Holiday
closures
See page 4





What are you and your unit planning for 2016?

In September, the Adventure in the Midlands booklet for 2016 events will be posted to Unit Main Contacts.

Make sure you look out for your copy and share it with your Unit Team.

You will also be able to find booking forms and more information at www.girlguiding-midlands.org.uk

Their biggest event for 2016 is a fantastic trip for Guides and Brownies on Sunday 12 June to West Midlands Safari Park (see www.wmsp.co.uk to learn more about what's on offer).



We are currently looking into the possibility of arranging coaches from across Leicestershire to this event so watch this space for news about that.

2016 is going to be another amazing year!



Emma Chodynicky
Guiding Development Coordinator

Pass It On Leicester

GIRLGUIDING LEICESTERSHIRE BACKS NEW DONOR CAMPAIGN and teams up with Rik Basra and Anthony Nolan charity for #PassItOnLeicester campaign



We are joining a campaign during Blood Cancer Awareness Month, in a bid to make Leicester a 'lifesaving city'. The #PassItOnLeicester campaign, which will run throughout September will see every corner of the Leicester and Leicestershire community uniting to save lives.

The Rik Basra Leukaemia Campaign is a local blood cancer charity, working closely with Anthony Nolan. It was in September 2011 that Rik, a Leicestershire Police Inspector, discovered that his acute myeloid leukaemia - which he'd beaten two years before - had returned. Thankfully, he found that one selfless person to be a lifesaving match.

Girlguiding Leicestershire is one of 31 companies and community groups who will host donor recruitment drives and awareness events for the Anthony Nolan stem cell donor register during September - one on each day of the month - to pass on the vital and lifesaving message that it's easy to donate your stem cells.

A flag will be passed from host to host during the month, before being taken to the Leicester Infirmary where patients with blood cancer are treated.

Girlguiding Leicestershire is due to host its event on:
Wednesday 23 September

where anyone aged 16-30 can join the register - see page 14



Campfire Capers

On Saturday 4 July, 70 members of The Senior Section and Leaders gathered at Topstones, our county campsite, for a BBQ and campfire. Tents were pitched, the BBQs were fired up and everyone enjoyed burgers and sausages in the sunshine before heading down to the campfire circle to do some singing, joined by

the Guides from the Baden-Powell Challenge weekend who were also at Topstones.

At the end of the campfire we said goodbye and thank you to Helen Oliver, who has now finished her appointment as County Ranger Adviser. Thank you Helen for everything you've done for the Senior Section in Leicestershire!

After the campfire it was time for cake, hot chocolate and bed for the 50 Senior Section members and Leaders who stayed over. In the morning, everyone had breakfast, struck their tents and headed home. The weather, the food and the campfire were all brilliant, and it was great to see so many Senior Section members there, especially some who hadn't camped before. A special badge designed by Coalville Rangers (with glow in the dark thread!) is already winging its way to everyone who came to the campfire.



Celebrations for Pam



Rutland Division recently celebrated their administrator Mrs Pam Gilbert's 70th birthday at the Rutland Guiding Headquarters in Oakham. Pam retired from running her own unit a few years ago but has remained active within the Division, by supporting Leaders, arranging meetings, training, looking after our Guiding hall in Oakham, being

available at the end of the telephone and much more.

To mark Pam's special support and service to Guiding in Rutland a presentation was made by Mrs Pat Morley (Deputy Lord Lieutenant of Rutland) on behalf of Guide leaders and Pam was asked to become our President.

DISCUSSION BUS .

On Wednesday 23 September, at 6.30pm there will be a special event for Senior Section members - come along to eat some free pizza and find out more about helping people with blood cancer and other blood disorders. If you are aged 16+ then you will have the opportunity to choose whether to join the register of stem cell donors by giving a spit sample.

At 7.30pm there will be a meeting of **The Discussion Bus**, Girlguiding Leicestershire's Senior Section Forum. The meeting is open to anyone aged 14 - 25. We'd like to get as many Senior Section members as possible to attend both parts of the evening, but if you're only able to attend one part then that's fine too. Consent forms will be required for under-18s attending either part of the evening, please download this from girlguidingleicestershire.org.uk (under Pass It On) and bring it with you.

So that we know how much pizza to order, please email louise@leicestershireguides.org to let us know if you're coming and whether you have any dietary requirements. We look forward to seeing you there!

#Pass it on all-day tea party.

Girlguiding Leicestershire will be hosting a Tea Party on Wednesday 23 September at the County Office from 10.00 am - 5.00 pm in support of the Pass It On Campaign - see page 2 for information about this.



If there are any 16-30 year olds who would like to register on the Anthony Nolan register, please come along. If you are beyond the age to register, then please come and have a cup of tea with us and find out about the work of the Anthony Nolan trust.

Any donations of cakes or raffle prizes, would be gratefully received. Please bring them to County office.

Louise Mynott

louise@leicestershireguide.org

Girlguiding Leicestershire Senior Section hits The Clothes Show!

Aged 14 - 25? Fancy a day out at "Britain's Fashion Festival"?

This December, Girlguiding Leicestershire Senior Section will be visiting The Clothes Show at the NEC in Birmingham. We will all travel there together on a coach which will pick up from 2 locations in different parts of the County. The pickup locations will be decided once we know who is going.

Date: Sunday 6 December

Cost: £25 plus coach fare

How to book: Booking forms will be on the website from 1 September. Bookings must be received by Wednesday 30 September.

For more info about The Clothes Show, visit clothesshow.com

N.B.: Places are limited and will be allocated on a first-come-first-served basis. Your place will not be booked until payment is received.

Megan Thomas
meganrthomas@live.co.uk

International News

After a busy summer term I am pleased to announce the following girls from Leicestershire have been successful, in securing a place on an International opportunity in 2016 after attending the Opportunities weekend we held in April.

Georgina Moore	Vietnam	Hinckley
Chloe Ibbotson	Europe	Loughborough
Orla Canavan	Europe	Blaby
Jess Peers	Stateside	Ashby
Isobel Sheard	Stateside	Oadby Wigston
Sali Jones	Stateside	Oadby Wigston
Hebe Jackson	Stateside	Loughborough
Georgia Brookes	Stateside	Loughborough
Emily Beirne	Stateside	Ashby
Karina Shah	Stateside	West
Bethany Letts	Stateside	Ashby
Charlotte Pedley	Stateside	Loughborough
Lucy Stephens	Stateside	Oadby Wigston
Ella Metcalfe	Stateside	Melton
Taryn Page	Stateside	Loughborough

We wish all the girls good luck with their fundraising and hope they are excited about their International adventure.

There will be three 'International Road Shows' in the autumn term to hear all the wonderful stories and tales from this summer's adventures. Hope to see you there.

Wednesday 7 October 2015 7.30pm - 9.00 pm

St Peters Church Hall, Wigston Road, Oadby, Leicester LE2 5QE

Monday 12 October 2015 7.30pm - 9.00 pm

County Office, 97 Princess Road East, Leicester LE1 7DW

Loughborough Division October 2015 venue and date TBC...

Please contact me traceysim64@hotmail.co.uk

Tracey Ball

County International Advisor

NEW APPOINTMENTS

Donna Stephenson

Stocking Farm District Commissioner

We wish her good luck in her new role



Want to take your Guides or Senior Section climbing over the winter?

From November to February there is an opportunity for girls to experience climbing at Beaumont Leys Leisure Centre.

The climbing will be with a Qualified Guide Instructor, and Leaders will need to pay the centre fee of £5.10 (to Beaumont Leys) per girl and a reimbursement of diesel expenses to the instructor of £10.00. Sessions will last approximately 90 minutes and can be for up to 10 girls. If many more girls wish to attend then a 2 hour 30 minute session can be arranged with the girls climbing in two groups.

Thursday nights are the likely nights, but other evenings can be arranged.

There is also an opportunity for adult/Senior Section members to learn to instruct climbing by helping out on these sessions, leading to attending a Level 1 training course.

For more information please contact Dawn Scott
dawnguiding@btinternet.com

The closing date for the next eBulletin will be

Thursday 1 October 2015

Please send any articles to office@leicestershireguides.org
website@leicestershireguides.org

Guiding Essentials Leicestershire

The Shop re-opens on Tuesday 1 September

Open usual hours October half term

Closed for Christmas 3.00 pm Friday 11 December.
Re-opens Monday 4 January 2016

**N.B. No orders will be dealt with between
Friday 11 December 2015 and Monday 4 January 2016**

DIARY 2015

SEPTEMBER

3	Membership Support	7.30 pm	County Office
6	County Exec (Sunday)	9.30 am	Bosworth Hall
8	Intro to Leadership	7.30 pm	County Office
9	Residential Advisers	7.30 pm	County Office
9	City Trefoil Guild	2.00 pm	County Office
12	Safe Space	2.00 pm	Ashby
13	Intro to Leadership - First Response	10.00 am	County Office
15	Intro to Leadership	7.30 pm	County Office
21	Charnwood 2016 CMT meeting	6.30 pm	County Office
21	Mentor Evening	7.30 pm	County Office
22	Intro to Leadership	10.00 am	County Office
23	Pass it On event	10.00 am	County Office
25	Charnwood Youth Forum	7.30 pm	County Office
26	County Trefoil Guild Exec	2.00 pm	County office
26	Guide Leaders training	9.45 am	Topstones

OCTOBER

1	eBulletin deadline	10.00 am	County Office
1	Guiding Development meeting	7.30 pm	County Office
7	International Road show	7.30 pm	Oadby
12	International Road show	7.30 pm	County Office
19	Charnwood 2016 CMT meeting		Scout HQ
23-25	Baden-Powell Challenge weekend		Exton
26	Finance Committee meeting	7.30 pm	County Office
27	Trainers meeting	7.30 pm	County Office

NOVEMBER

1	Charnwood Staff Showcase	10.00 am	County Office
9	Presentation Evening	7.30 pm	TBC
11	Exec Meeting	7.30 pm	County Office
11	City Trefoil Guild	2.00 pm	County Office
14	Brownie Leaders Training Day	10.00 am	Longslade School
16	Charnwood 2016 CMT meeting	6.30 pm	County Office
20	Charnwood Youth Forum	7.30 pm	County Office
21	Rainbow Leaders Training Day	10.00 am	Thornton
27-29	Baden-Powell Challenge weekend		Topstones
28	County Trefoil Guild Exec	2.00 pm	County office

DECEMBER

5-6	Rainbow Residential Practice		Hayfields
9	City Trefoil Guild	2.00 pm	County Office
11	Guiding Essentials Shop closes	3.00 pm	County Office
23	Office closes	4.00 pm	County Office

2016

JANUARY

4	Office re-opens	10.00 am	County Office
4	Guiding Essentials Shop re-opens	12 noon	County Office

Please book a place on the trainings of your choice by completing the booking form below or the on-line version via our website

All sessions will be at County Office unless stated otherwise.

- Evening sessions will start at 7.30 pm and finish at 9.00 pm (unless otherwise stated) except for First Response Renewal which will start at 7.00 pm.
- Full First Response will start at 10.00 am and finish at 4.30 pm (Packed lunch, comfy uniform, notebook and pen needed).
- Please check with County office if the shop will be open.
- Uniform is worn at all trainings.
- There is no charge for the training sessions. However, for First Response only, if you fail to let County Office know that you are unable to attend, then your Division will be charged £5 per place.
- Materials are free except the First Response book which will cost £3.
- There is often a waiting list so PLEASE tell us if for any reason, you have to cancel.
- Food Hygiene requires a £20 cheque when booking. This is to cover the cost of exam papers and certificates, you will also need photo I.D. on the day - without this you will not be allowed to do the course.



**PLEASE COMPLETE A FORM FOR EACH PERSON
WISHING TO ATTEND ACTIVITY/TRAINING**

send to: Trainings, 97 Princess Road East, Leicester, LE1 7DW

or EMAIL YOUR REQUEST TO :
office@leicestershireguides.org

please remember to include all the details below

Name of Training/Activity

Date of session

Name Membership No.....

Unit/Division

Contact Telephone Number

Role (e.g. Leader, Leader in Training etc)

Email

confirmation of booking will be sent via email only.

First Response only - if you fail to let County Office know that you are unable to attend, then your Division will be charged £5.

Please notify the County Secretary via email or by calling 0116 2545290 identifying any special needs with regard to accessing buildings, rooms etc.

TRAININGS AND OPPORTUNITIES



Introduction to Leadership in Guiding

Trainings and workshops to give new Leaders skills and knowledge to assist in their role in Guiding.

Tuesday 8 September - Running your Unit

Sunday 13 September - Full First Response (10.00 am - 4.30pm)
Packed lunch required

Tuesday 15 September - Sectional

Tuesday 22 September - Membership support and Finance

All sessions at County Office 7.30pm - 9.00pm

Interested? Not reserved your place yet?

*see details at the bottom of this page
on how to book*



Safe Space training

Moira Centenary Chapel, Measham Road, Moira DE12 6AA

Saturday 12 September
2.00 pm - 5.00 pm

Reserve your place now via County office - see below
for details on how to book

N.B. All bookings for trainings must be made through County Office

Please ensure you submit a **fully completed** form, whether
written or electronic

The booking form for trainings is on Page 12, or use the on-line
form found on the Leicestershire website.

First Response only - any no-shows for these courses,
the relevant Division will be charged £5 per place.

TRAININGS AND OPPORTUNITIES



Guide Leaders training

Open to all Leaders and Leaders in Training

'Building the Adventure into your programme'

Topstones County Campsite, Cold Newton,
Nr Tilton on the Hill, LE7 9FH

Saturday 26 September 2015



9.45am Registration

4.30pm training ends



5.30 pm optional BBQ and campfire until approx. 8.00pm

Packed Lunch and appropriate outdoor clothing required

- Find out how to get the adventure into your programme and try out the practical activities at Topstones.
- Lunchtime outdoor marketplace
- Optional BBQ and campfire training (Cost £5)



Reserve your place now via County office - see page 5 for details on how to book



Rainbow Leaders Training Day

Thornton Community Centre, Main Street,
Thornton LE67 1AH

Saturday 21 November

10.00 am - 3.30 pm

A day of inspiration, ideas and new activities along with time to ask questions and share ideas.

On the day there will be a choice of short sessions to choose from, with topics ranging from: five minute fillers, using the roundabouts, getting girls actively involved in decision making and giving them a voice in Guiding, instant low cost activities - not just craft, and many more..

Drinks will be available throughout the day, please bring a packed lunch.

Reserve your place now via County office - see page 5 for details on how to book

TRAININGS AND OPPORTUNITIES



Brownie Leaders Training

Palmer Tomkinson Centre
Wanlip Lane, Birstall, Leicester LE4 4GH

Saturday 14 November

10.00 am - 12 noon

Getting the "sparkle" in to your unit meetings
without using glitter!

Open to all Brownie Leaders/Leaders in Training and Young Leaders

Add some adventure and challenge to your weekly meeting

The shop will be on site 12noon - 2pm

(please place orders with the shop, in advance for collection)

To book a place - see details on page 5



Brownie Sixer and Seconds Day

Saturday 14 November

10.00 am - 4.00 pm

Palmer Tomkinson Centre - Birstall

Leaders - bring your Sixers and Seconds to a day just for them!

The day is designed to develop the leadership skills of the girls in their role as Sixer or Second.

During the day the girls will take part in a wide range of fun activities to enhance their leadership skills and to develop their confidence to try new things in the unit.

Leaders will work together with their Brownies, to find out how to promote leadership skills with girls in their Unit.

Everyone will need a packed lunch (drinks will be provided)

Uniform to be worn and girls to wear soft soled shoes

The Guide Shop will be open during lunch, so the girls might like to bring a small amount of pocket money (If Leaders wish to place an order for collection, please contact the shop in advance)

Please book your places with the County Office

Email: office@leicestershireguides.org

Girlguiding Leicestershire

97 Princess Road East

Leicester

LE1 7DW

Stating names and membership numbers of all attending, a telephone number and email address we could contact you on.

We will issue an ICE form for your use nearer the date



CHARNWOOD 2016

What happens at Charnwood?

Be part of an exciting week of adventures. Camp out in a tent. Make new friends. Catch up with old friends. Try so many activities that you could never do at a unit camp. Gain new skills. Do silly activities. Feel the excitement of being part of a huge crowd at the opening and closing ceremonies. Spend a week outdoors. Meet Guides and Scouts from around the world. Wear your subcamp colours. Wear a wristband. Eat s'mores. Get a new badge. Go home tired but happy with a few tales to tell.

Have you heard about THE YOUTH FORUM?

The Youth Forum are a small group of Guides, Scouts, Explorers and members of the Senior Section from around Leicestershire. We are voicing the opinions of participants so they can have a say on Charnwood - from the theme to activities.

If you would like to have your say, use the hashtag #YF2016 #BePartOf on Twitter or Facebook! Or email youth@charnwood.org

Beck Jeffs
Charnwood 2016 Youth Ambassador



<https://www.facebook.com/groups/742344785848919/>
<https://twitter.com/charnwood2016>



Don't forget....Rainbows and Brownies....

....will also get the opportunity to visit Charnwood 2016 next August for their own Visitor's Day - 'Mini Charnwood Experience'

Taking place on Monday 1 August to Thursday 4 August
10.00 am - 4.00 pm

More details available soon - keeping checking www.charnwood.org and see Charnwood Rainbows, Beavers, Brownies, Cubs Channel (CRBBCC)



CHARNWOOD 2016

#Be part of it.
(www.charnwood.org)

What is Charnwood?

Charnwood is a huge camp organised by Leicestershire Scouts and Guides, every 5 years. It is for Guides and The Senior Section and their scouting equivalent from anywhere in the world. A large tented village is built to provide facilities and entertainment for 3-4 thousand people - it's BIG!

How do I book?

Groups can book through the website www.charnwood.org

Can I be part of the staff team?

All the teams are recruiting now. Check out the website to find out what roles are available.

Do you love camping, but are not a Guide Leader? Offer to go with a local group - they will welcome you with open arms or join the staff team. See the website for the many varied roles available.

If you hate camping, but would like to be involved? You can help with paperwork, shopping, visitors days.

Never been camping before? This is a perfect time to try it. If you camp with a group, there are plenty of people to ask for advice and you do not have to organise activities. Just feed the girls, watch them having a great time and be there for them if they need help or comfort.

Unable to take the full week off work? Job share! Lots of help is needed at the weekends, putting up tents and taking them down. You will still feel the buzz and be able to take part in opening and closing ceremonies. The cost for leaders is £45. This includes a Necker, T-shirt and badge with the provision of "proper" toilets and showers, so is reasonable even for half a week!

Do your girls want to go but there isn't a Leader who can take them?

Give your girls the chance to go by linking with another group. They will only have this one opportunity to go as a Guide. Ask your local Commissioner for advice.

Charnwood is about facing challenges, working together, making friends and most of all, having fun.

It is for everyone!




CHARNWOOD 2016
30TH JULY - 6TH AUGUST

Whatton House, Long Whatton near Loughborough, Leicestershire, England

Charnwood is an **International Camp** where you can try **new activities** and make **new friends** within our **World of Entertainment**

In our **Entertaining Channels of Adventure** take part in
Axe Throwing to Zorbing, Crafts to Dance,
Mountain Biking to Climbing

ONLY £165

for more information
WWW.CHARNWOOD.ORG

© Copyright 2012 The Scout Association Registered Charity number 306101 (England and Wales) and SC038437 (Scotland). Girlguiding Leicestershire County Registered Charity number 521779.

WOULD YOU LIKE TO BE ON THE STAFF AT



30TH JULY - 6TH AUGUST

LEICESTERSHIRE'S 8TH INTERNATIONAL CAMP

COME AND FIND OUT MORE AT OUR
“STAFF SHOWCASE”

Meet Team Managers and find out what opportunities are available

SUNDAY NOVEMBER 1 2015

DROP IN ANY TIME BETWEEN 10AM AND 2PM

GUIDE COUNTY OFFICE

97 Princess Road East, Leicester LE1 7DW

Light refreshments will be provided

Applications invited from
 Leaders/Parents/Supporters of any
 section—subject to normal recruitment
 checks.
 Staff **MUST** be aged 18 plus on the first
 day of camp

If you can't make it on November 1,
 please check our website
WWW.CHARNWOOD.ORG
 for information about being on the staff,
 or email any questions to:
 staff@charnwood.org

